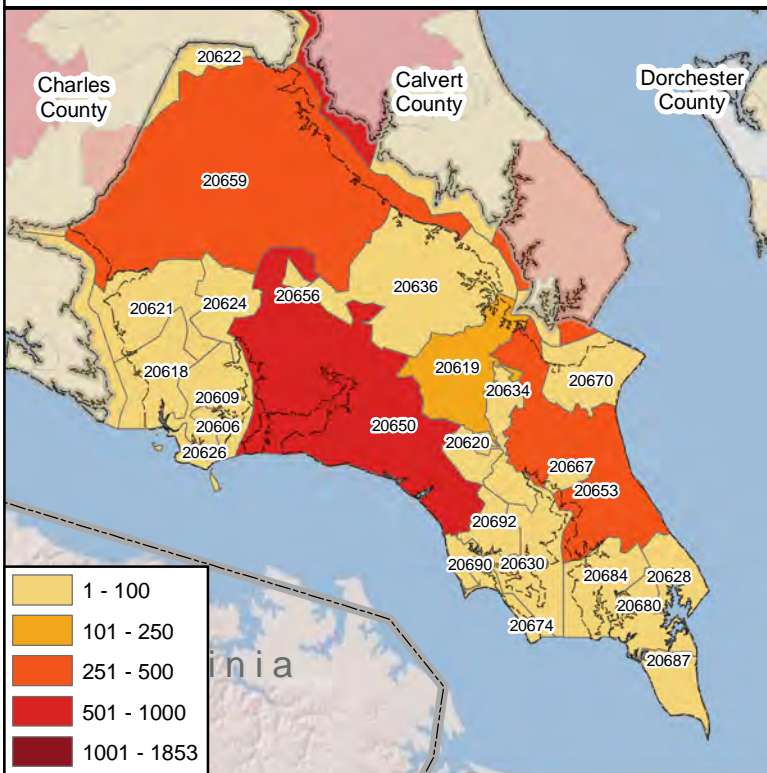




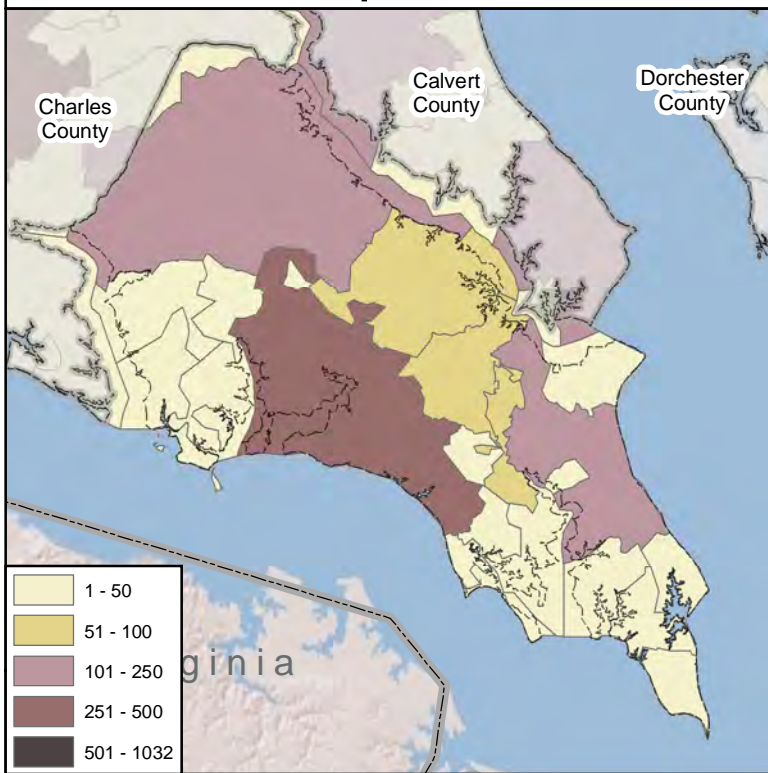
# Calls By Call Type

St. Mary's County Calls By Zipcode  
January 1, 2009 - December 31, 2009

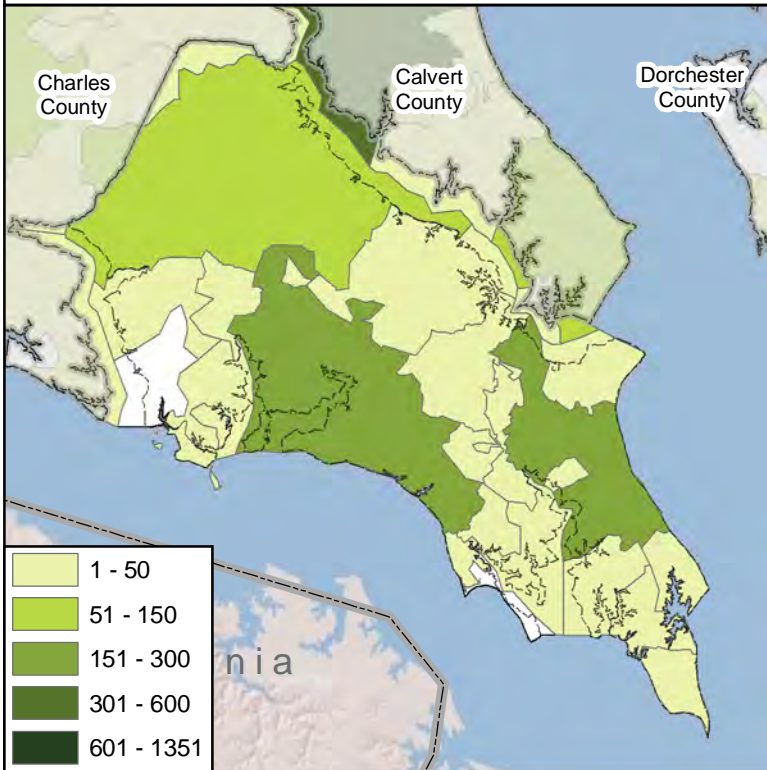
## Total Calls



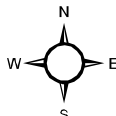
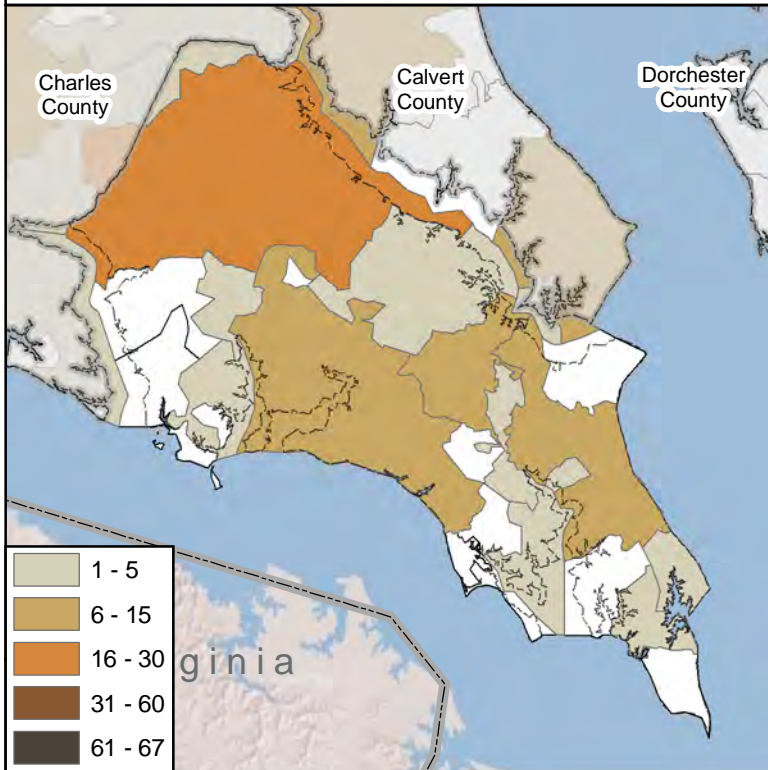
## Human Exposure Calls



## Information Calls



## Animal Exposure Calls



Notes:

1. Human and Animal Exposures: Confirmed non-exposures are excluded.
2. Information Calls are drug identification calls to the Maryland Poison Center where no exposure has occurred.