



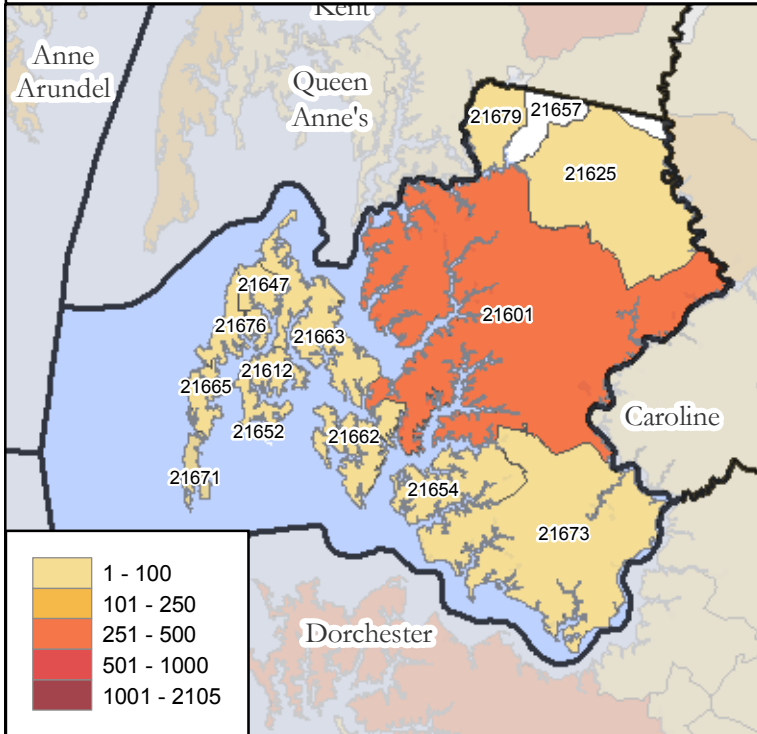
# Maryland Poison Center

University of Maryland School of Pharmacy

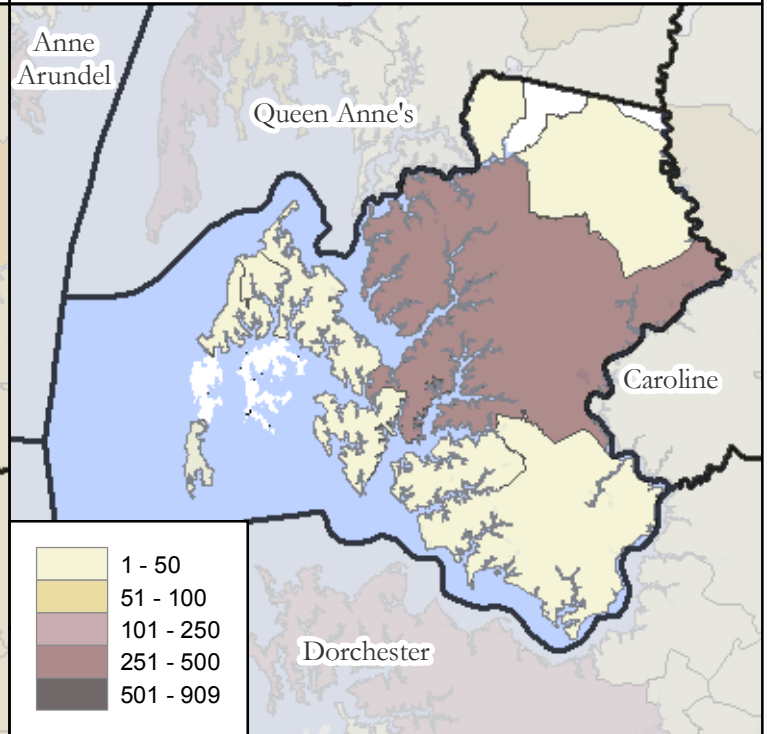
# Calls By Call Type

Talbot County Calls By Zipcode  
 January 1, 2008 - December 31, 2008

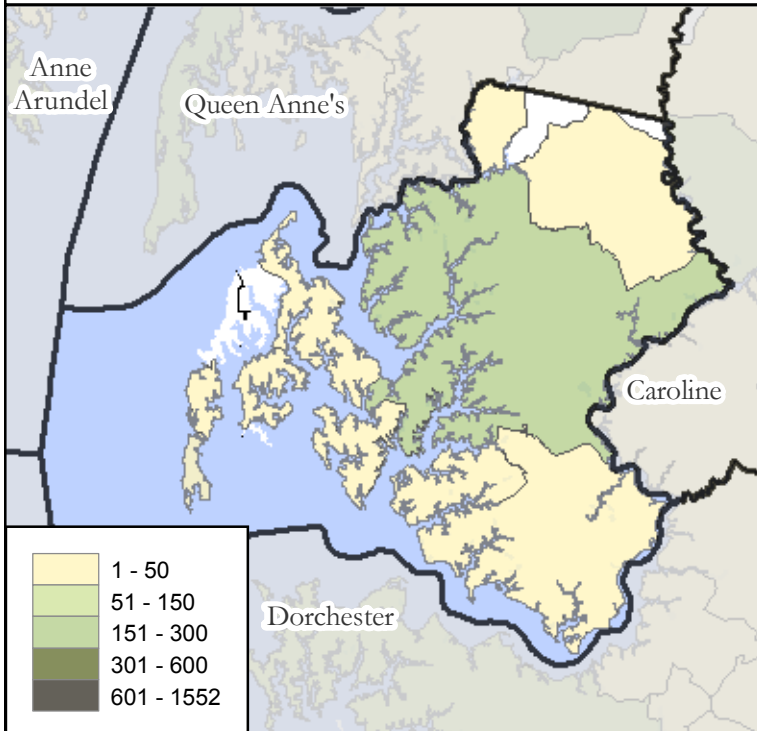
## Total Calls



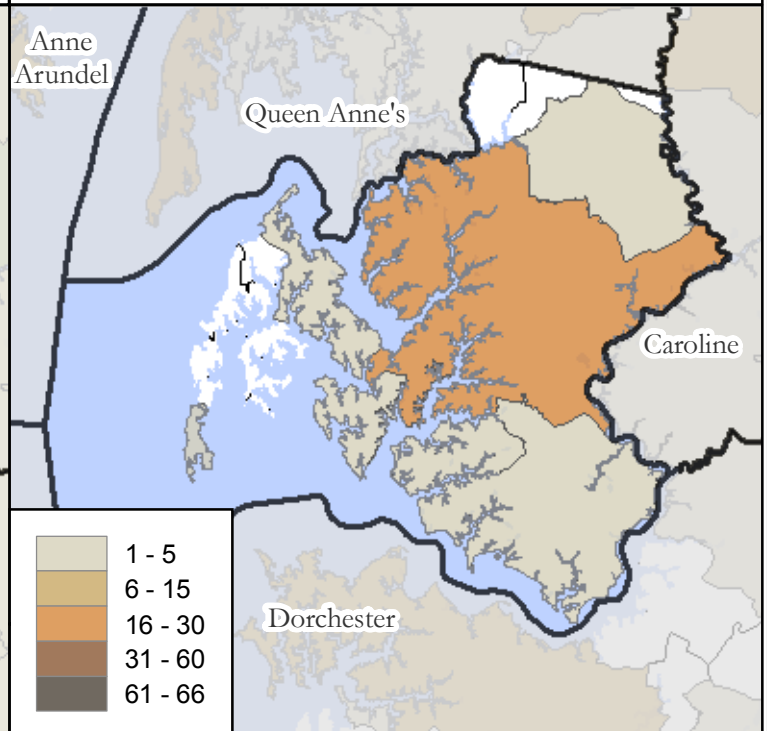
## Human Exposures



## Information Calls



## Animal Exposures



Map Prepared By:  
**Maryland Poison Center**  
 University of Maryland School of Pharmacy  
 Office Level One  
 220 Arch Street  
 Baltimore, Maryland 21201

Emergency Hotline: 1-800-222-1222  
 General Information: 410-706-7604

Date Prepared: April 2009

NOTES:  
<sup>1</sup>Human and Animal Exposures: Confirmed non-exposures are excluded.  
<sup>2</sup>Information Calls are drug identification calls to the Maryland Poison Center where no exposure has occurred.

