

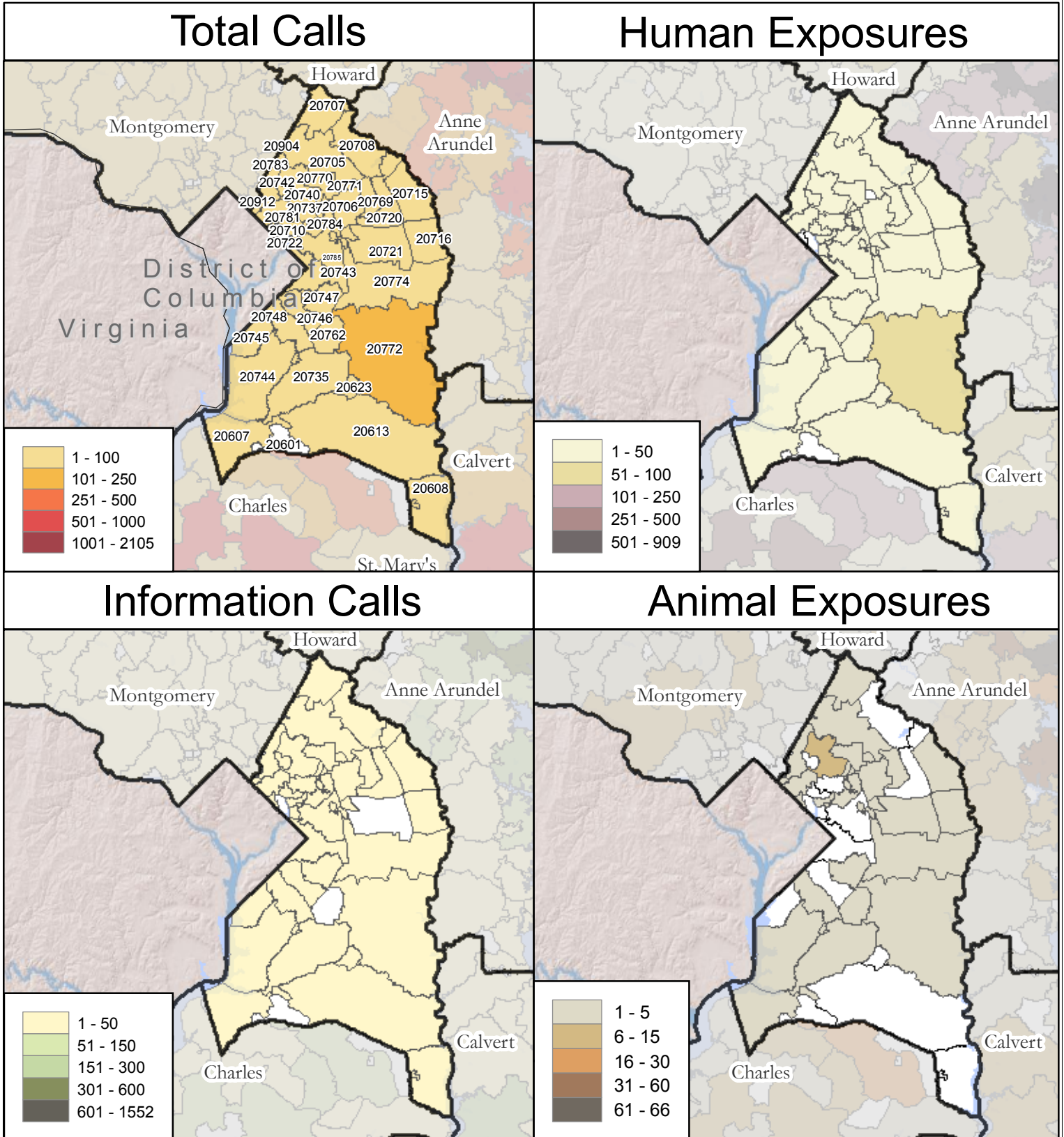


Maryland Poison Center

University of Maryland School of Pharmacy

Calls By Call Type

Prince George's County Calls By Zipcode
 January 1, 2008 - December 31, 2008



Map Prepared By:
Maryland Poison Center
 University of Maryland School of Pharmacy
 Office Level One
 220 Arch Street
 Baltimore, Maryland 21201

Emergency Hotline: 1-800-222-1222
 General Information: 410-706-7604

Date Prepared: April 2009

NOTES:

¹Human and Animal Exposures: Confirmed non-exposures are excluded.
²Information Calls are drug identification calls to the Maryland Poison Center where no exposure has occurred.
³Numbers for Montgomery and Prince George's counties reflect calls to the MPC only. The 800-222-1222 number automatically connects callers from these counties to the National Capital Poison Center in Washington, D.C. Some callers reach the MPC by dialing local telephone numbers still in service.

