

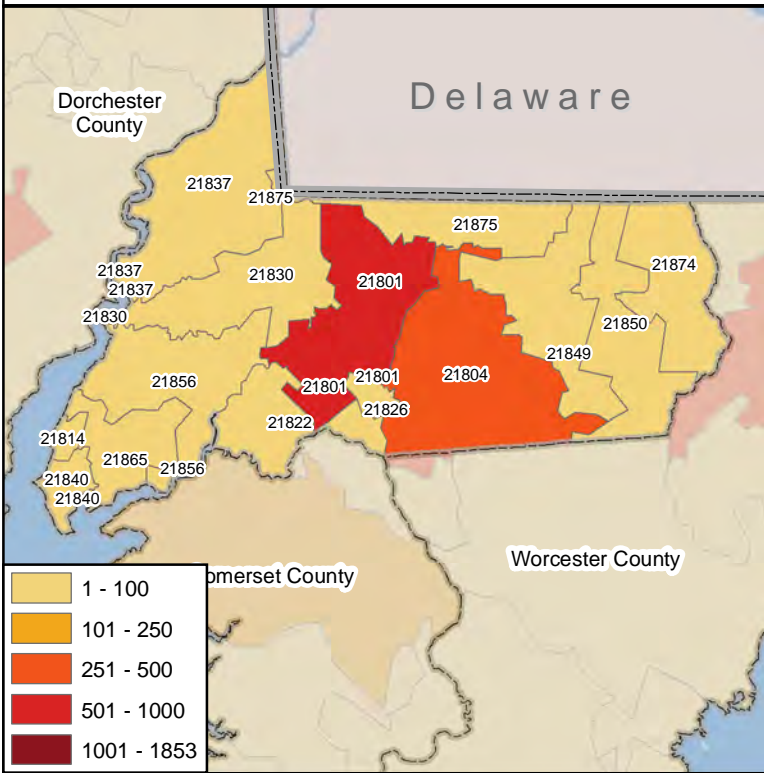


Maryland Poison Center
University of Maryland School of Pharmacy

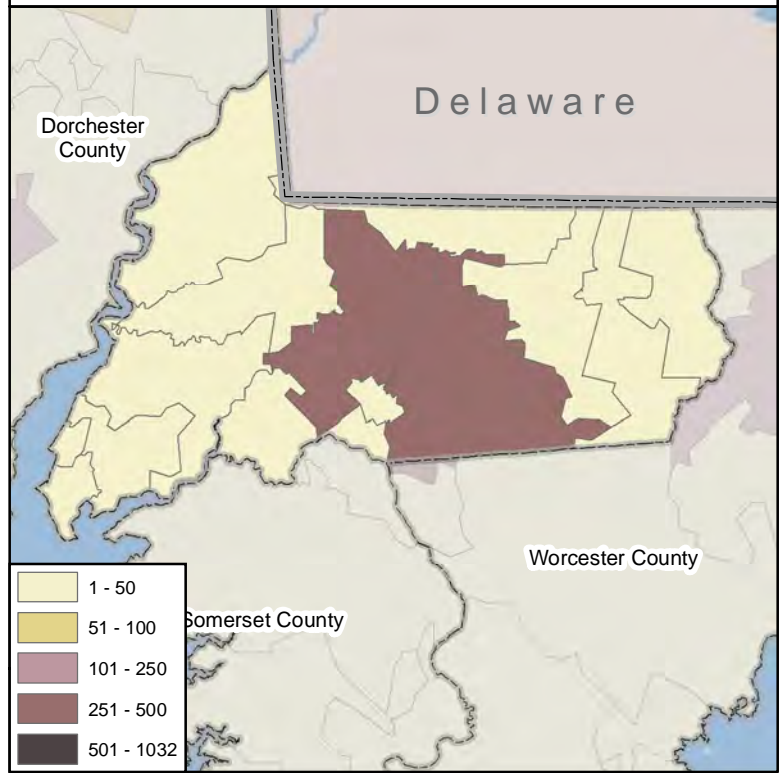
Calls By Call Type

Wicomico County Calls By Zipcode
January 1, 2009 - December 31, 2009

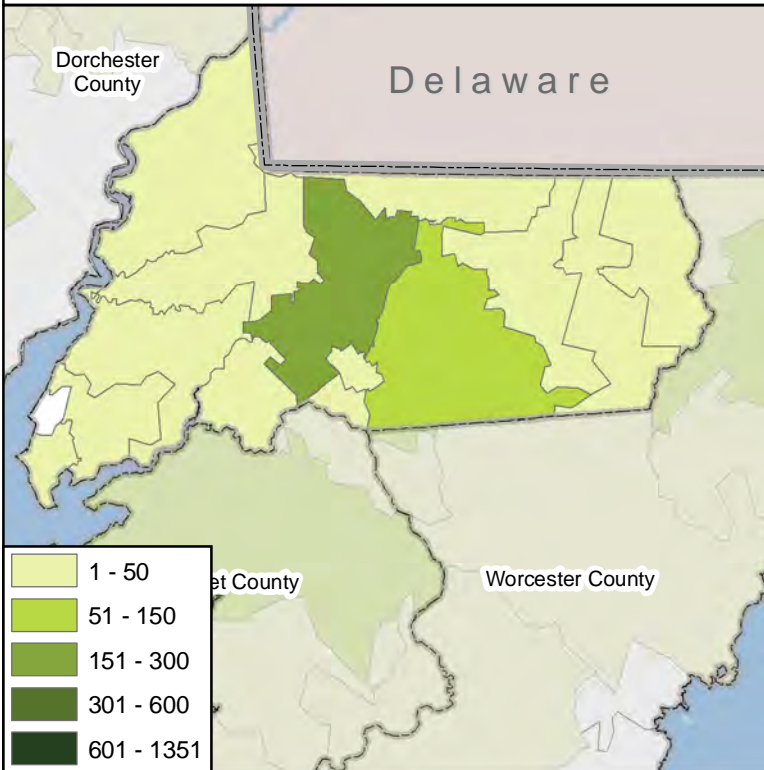
Total Calls



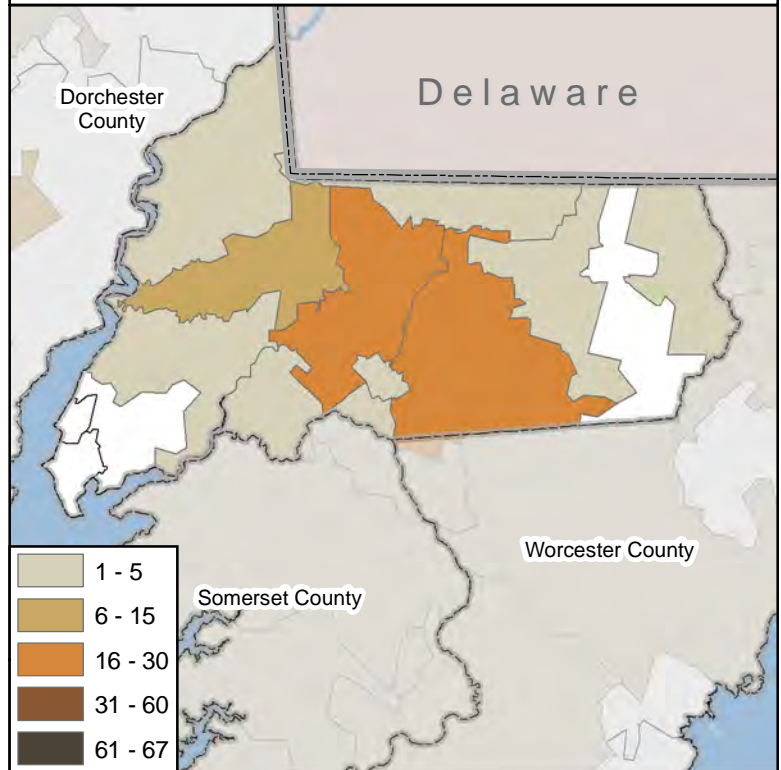
Human Exposure Calls



Information Calls



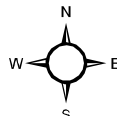
Animal Exposure Calls



Map Prepared By:
Maryland Poison Center
University of Maryland
Office Level One
220 Arch St
Baltimore, MD 21201

Emergency Hotline: 1-800-222-1222
General Information: 410-706-7604

Date Prepared: August 2010



Notes:

1. Human and Animal Exposures: Confirmed non-exposures are excluded.
2. Information Calls are drug identification calls to the Maryland Poison Center where no exposure has occurred.