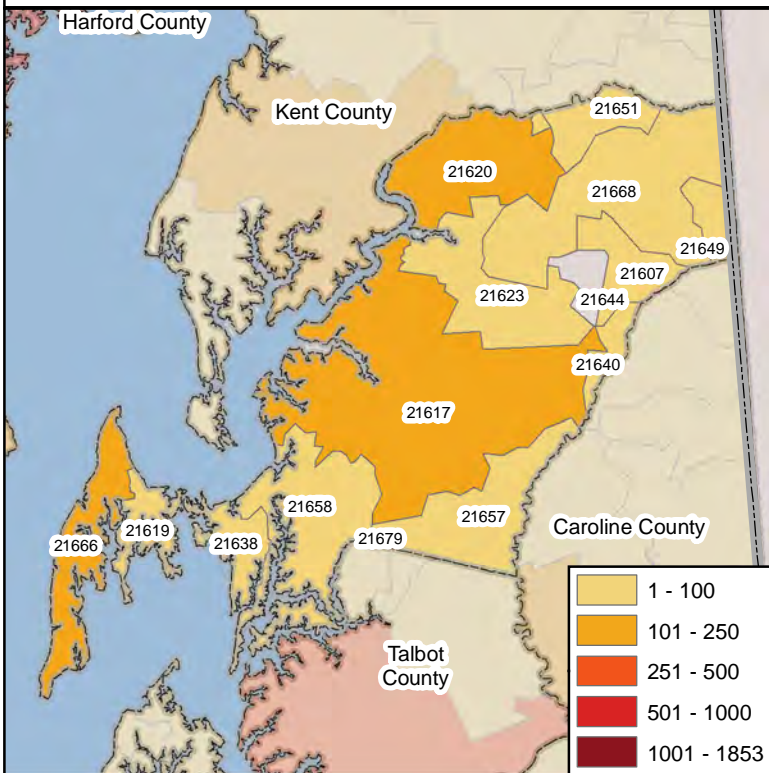




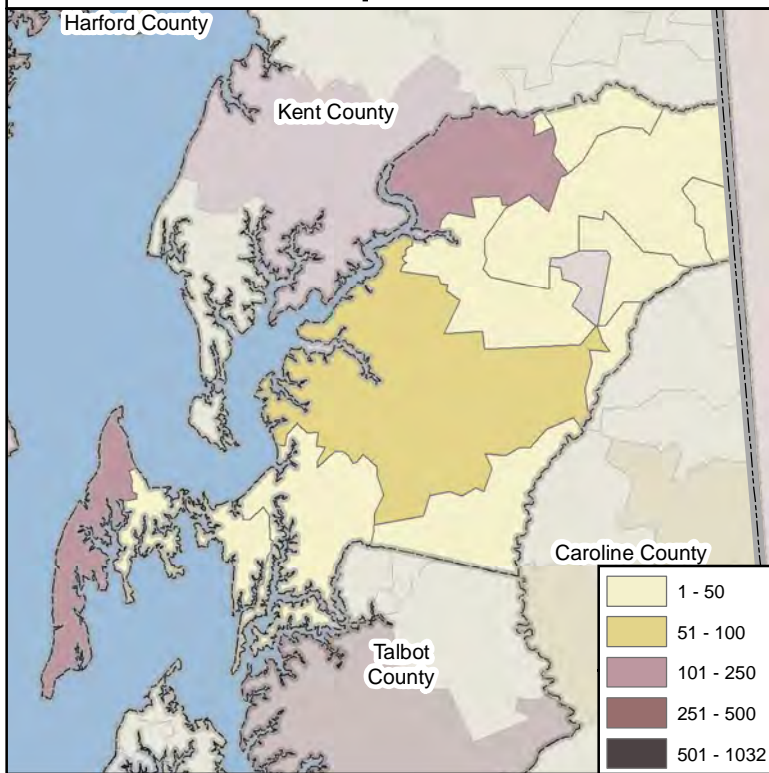
Calls By Call Type

Queen Anne's County Calls By Zipcode
January 1, 2009 - December 31, 2009

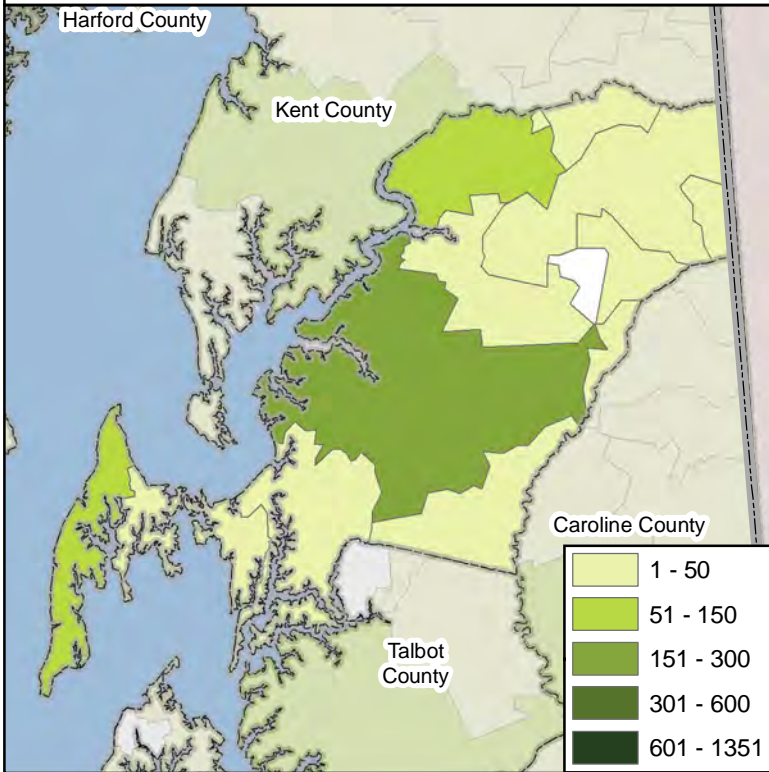
Total Calls



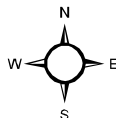
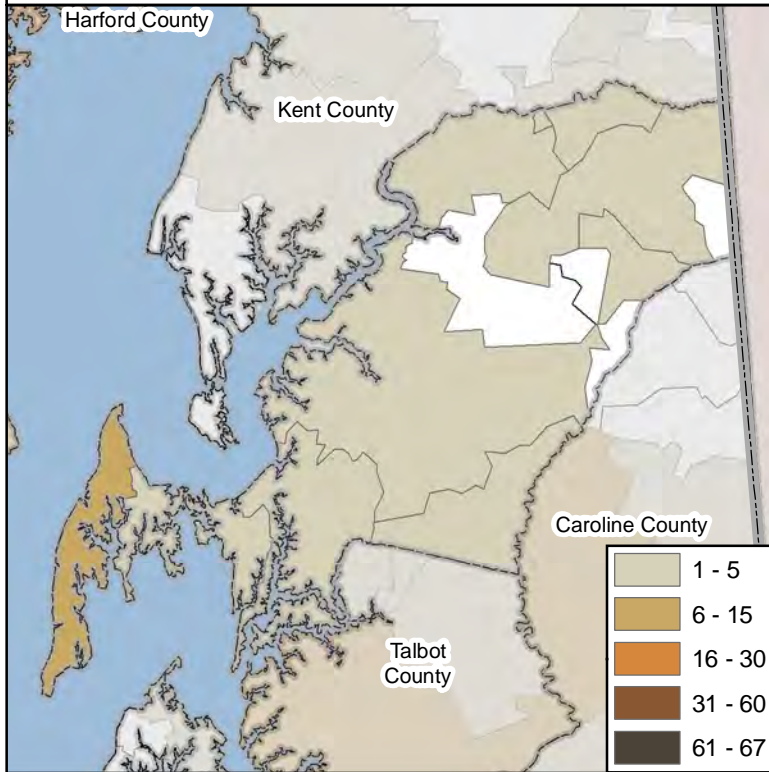
Human Exposure Calls



Information Calls



Animal Exposure Calls



Notes:

1. Human and Animal Exposures: Confirmed non-exposures are excluded.
2. Information Calls are drug identification calls to the Maryland Poison Center where no exposure has occurred.