

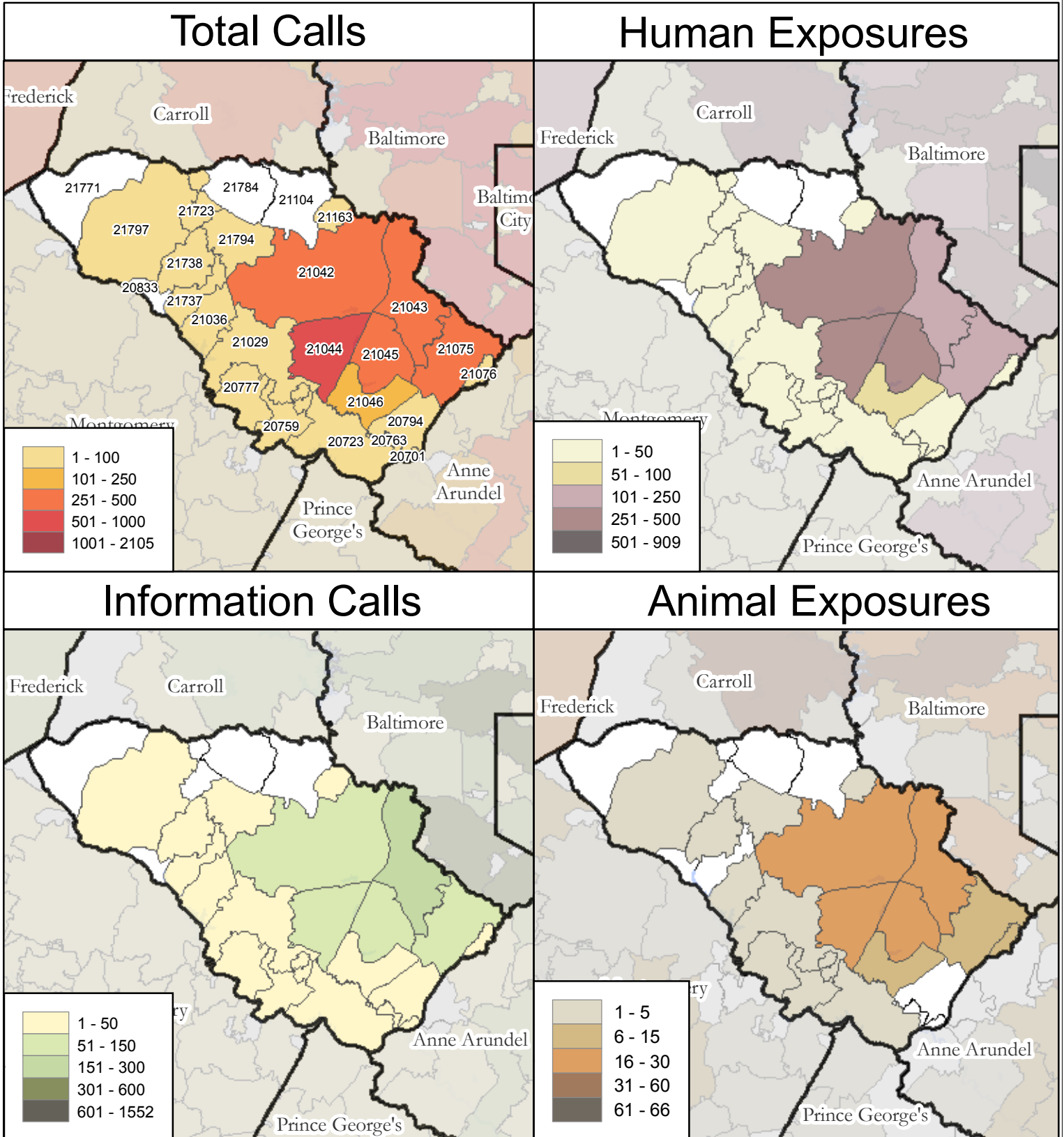


# Maryland Poison Center

University of Maryland School of Pharmacy

# Calls By Call Type

Howard County Calls By Zipcode  
January 1, 2008 - December 31, 2008



Map Prepared By:  
**Maryland Poison Center**  
University of Maryland School of Pharmacy  
Office Level One  
220 Arch Street  
Baltimore, Maryland 21201

Emergency Hotline: 1-800-222-1222  
General Information: 410-706-7604

Date Prepared: April 2009

NOTES:  
<sup>1</sup>Human and Animal Exposures: Confirmed non-exposures are excluded.  
<sup>2</sup>Information Calls are drug identification calls to the Maryland Poison Center where no exposure has occurred.

